



City and Borough of Juneau  
 City & Borough Manager's Office  
 155 South Seward Street  
 Juneau, Alaska 99801  
 Telephone: 586-5240 | Facsimile: 586-5385

DATE: October 23, 2020  
 TO: CBJ Assembly  
 FROM: Robert Barr, Planning Section Chief  
 RE: **Situational Update –Level 2 Moderate** - Operational Period 24 (10/15/2020 – 10/29/2020)

Overall Community Risk	Disease Situation	Hospital Capacity	Public Health Capacity	The Complete CBJ COVID-19 Dashboard can be found <a href="#">here</a> or by going to <a href="#">Juneau.org/COVID-19</a>
<b>Level 3 - High</b>	Community spread based cases are occurring at an increasing rate and the unsheltered/vulnerable population cluster is growing.	The hospital case load is stable.	The testing environment is stable. Local investigations are being conducted are beginning to be constrained due to the nature of local contact investigations.	

**Situation Assessment:** Our overall number of positive cases are climbing compared to previous weeks. Our 7 and 14 day case rate indicators are rising within the high alert level range. The disease is transferring within the unsheltered cluster and by community spread - residents are urged to take appropriate cautions and in particular to refrain from indoor, unmasked activities with individuals outside of family bubbles.

**Issues of Note:**

The EOC continues to manage Centennial Hall as an isolation support center. We anticipate 13 clients at the Hall this evening. We are performing another round of testing for the unsheltered population and those who support them today. Additionally, we have had between 20-40 clients per night at the warming shelter since Centennial Hall was opened.

We continue to engage with businesses impacted by the mitigation strategies who have exemption requests, both for gatherings and fitness classes. Those with mitigation plans in place can submit an exemption request to the EOC for consideration. To date, all requests submitted have been approved, some after modifications.

As a reminder, the community-wide influenza vaccination events (PODs) are occurring this weekend. Saturday at TMHS and Sunday at FDMS, both events 10a-2p. Saturday is drive-through only, ages 9 and up. Sunday is targeted for families with younger children, 6 months and up.

**Daily Numbers Report:**

COVID-19 In Juneau				
	Active	Recovered	Deceased	Cumulative

Resident	73	350	3	426
Non Resident	2	102	0	104
<b>Total</b>	<b>75</b>	<b>452</b>	<b>3</b>	<b>530</b>

Note: CBJ EOC data may differ from the data reported on the State of Alaska dashboard due to lags in data entry on the state level.

Disease Transmission/Contact Tracing:

We are reporting 10 new resident cases today. Four of these is associated with our PEH cluster which brings the total cluster count to 73. Of those, 39 are active and 34 have recovered.

Of the 10 cases being reported today, 4 are secondary, 1 is community spread, and the other 5 remain under investigation.

The effectiveness of contact tracing is somewhat limited with many of our current cases related to the unsheltered/vulnerable population cluster due to many individuals lack of clear contact information and occasional mental/behavioral health challenges.

The state dashboard is showing a lower number of resident cases and nonresident cases than what is reported on the CBJ dashboard. In addition, our recovered numbers continue to be larger than what is being reported by the state. This is due to the timing of reporting. CBJ numbers are more accurate.

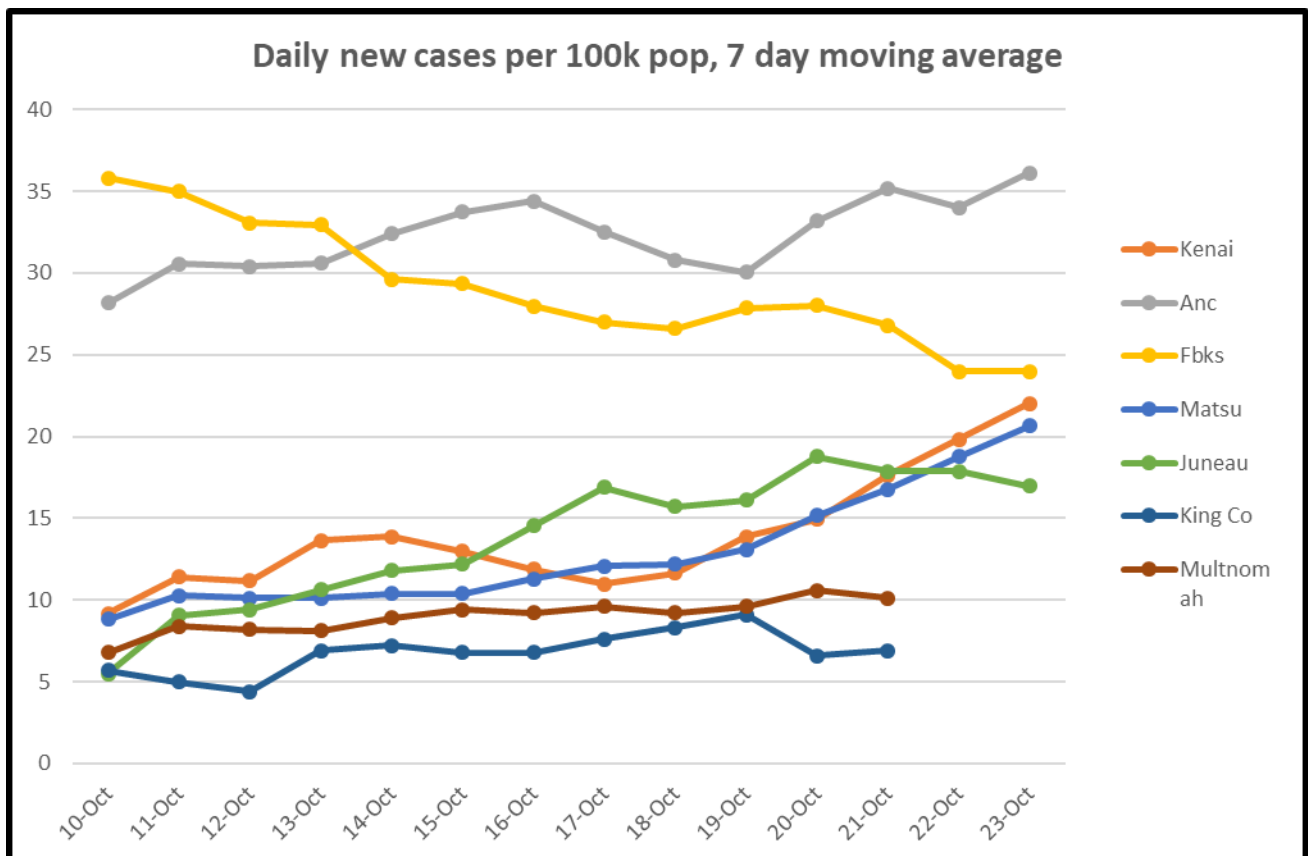
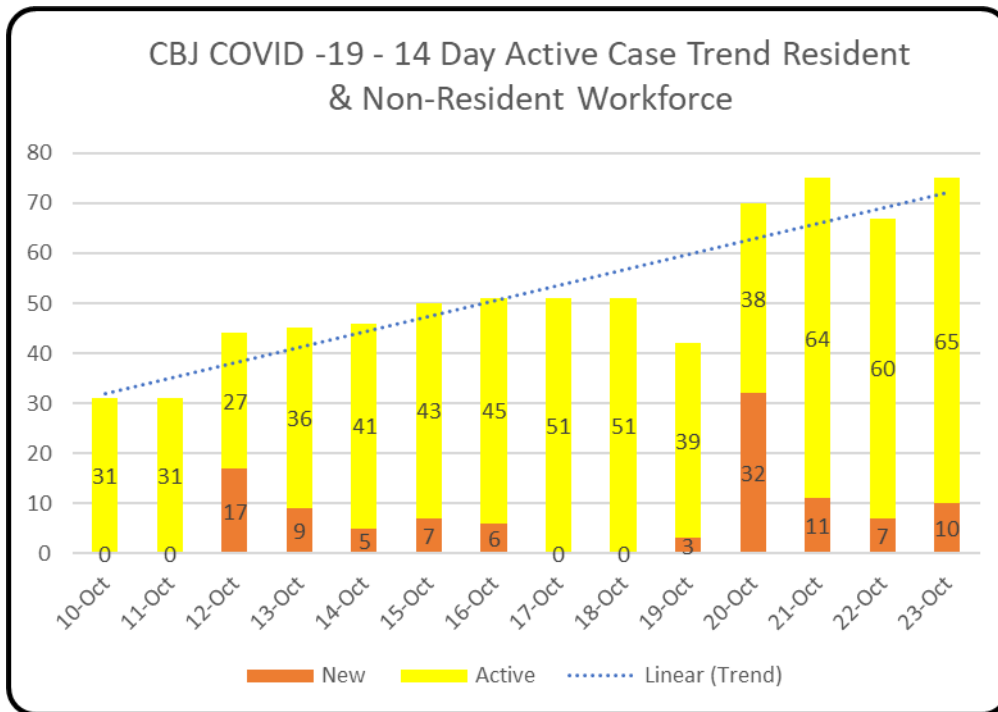
The State of Alaska is reporting 235<sup>1</sup> new cases today bringing the statewide cumulative case count to 13,067.

Testing:

On 10/22: 41 results were returned that were collected between 10/16 and 10/17, or a 5 – 6 day turnaround. One additional result was returned from 9/11/20, or a 41 day turnaround.

---

<sup>1</sup> In-state residents and non-residents



This chart tracks the number of new cases in the past 7 days, controlled for population. King County (Seattle) and Multnomah County (Portland) are included for context and due to travel frequency. The source data for Alaska is from the SOA dashboard. Out of state data is from the Harvard Global Health Institute (<https://globalepidemics.org/key-metrics-for-covid-suppression/>) and generally lags a day behind most of our other reporting. Policy recommendations at varying levels (<1, <10, <25, 25+) can be found on their website

**Friday Finance**

<b>COVID-19 City Cost</b>		
<b>Type</b>		<b>Amount</b>
<b>CARES ELIGIBLE SALARIES</b>	<b>\$</b>	<b>12,643,588</b>
<b>Police &amp; Fire Personnel</b>		10,915,086
<b>Substantially Dedicated Staff</b>		1,229,235
<b>Emergency New Hires</b>		350,056
<b>Medical/Family Leave (COVID)</b>		149,212
<b>OTHER DIVERTED SALARIES</b>	<b>\$</b>	<b>1,358,924</b>
<b>TOTAL COMMODITIES AND SERVICES</b>	<b>\$</b>	<b>3,416,096</b>
<b>CARES Commodities and Services</b>		2,143,181
<b>FEMA Commodities and Services</b>		1,272,915
<b>CARES ASSEMBLY GRANTS</b>	<b>\$</b>	<b>26,975,775</b>
<b>ASSEMBLY LOAN</b>	<b>\$</b>	<b>3,000,000</b>
<b>TOTAL CARES ELIGIBLE COVID-19 COST</b>	<b>\$</b>	<b>41,762,545</b>
<b>ALL COVID-19 COST</b>	<b>\$</b>	<b>47,394,384</b>